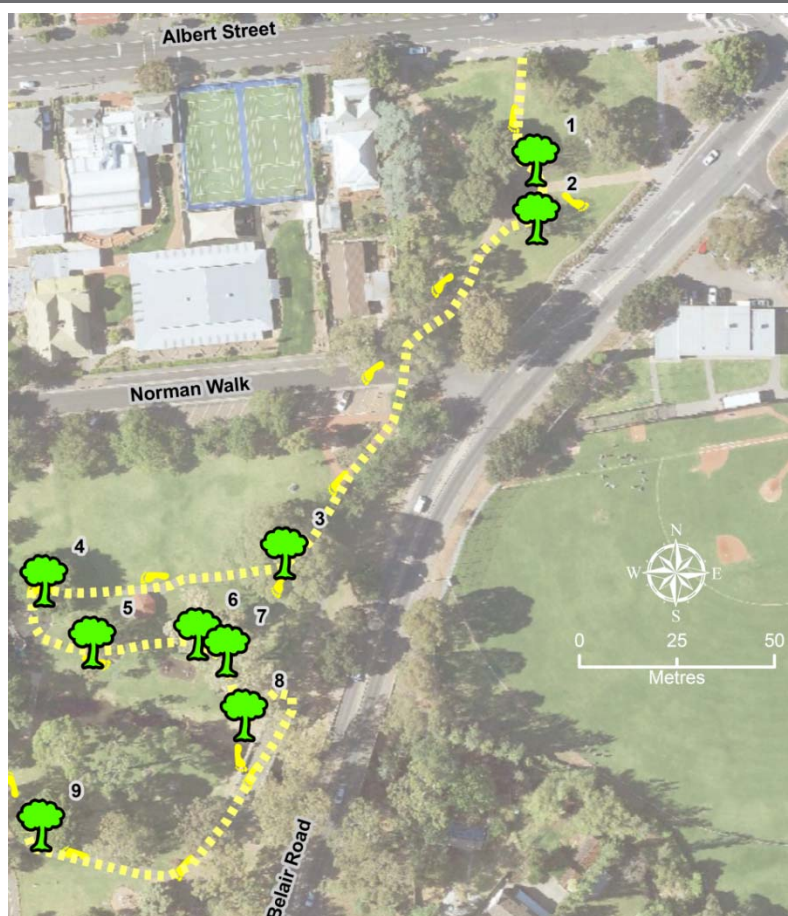


Mitcham Tree Trail

The Mitcham Tree Trail is a celebration of park trees in our city and the many benefits they provide. The trail is showcasing nine amazing trees in Mitcham Reserve.



Discover the trees with your children and learn about how trees can:

- Cool our City
- Provide shade, habitat and clean air
- Assist the City to adapt to the impacts of Climate Change.

Follow the trail and write down the letters on the tags to reveal a secret message and go in the draw to win a prize.

Cost:	Free
Recommended Age:	3-12 years
Where:	The trail is located at Mitcham Reserve on the corner of Norman Walk and Old Belair Road in Mitcham.
How:	Download a Tree Trail map from the City of Mitcham website at www.mitchamcouncil.sa.gov.au or collect a copy from the City of Mitcham Civic Centre at 131 Belair Road, Torrens Park or the Mitcham Library, 154 Belair Road, Hawthorn.
When:	2 December 2017 to 30 January 2018.
Prize:	Send an email to mitcham@mitchamcouncil.sa.gov.au titled "Mitcham Tree Trail" and tell us the secret message to go in the draw to win a \$100 voucher to buy some native plants at State Flora, located in Belair.

Contact the City of Mitcham on 8372 8888 or visit www.mitchamcouncil.sa.gov.au for more information.

See Terms and Conditions relating to applying for prize www.mitchamcouncil.sa.gov.au